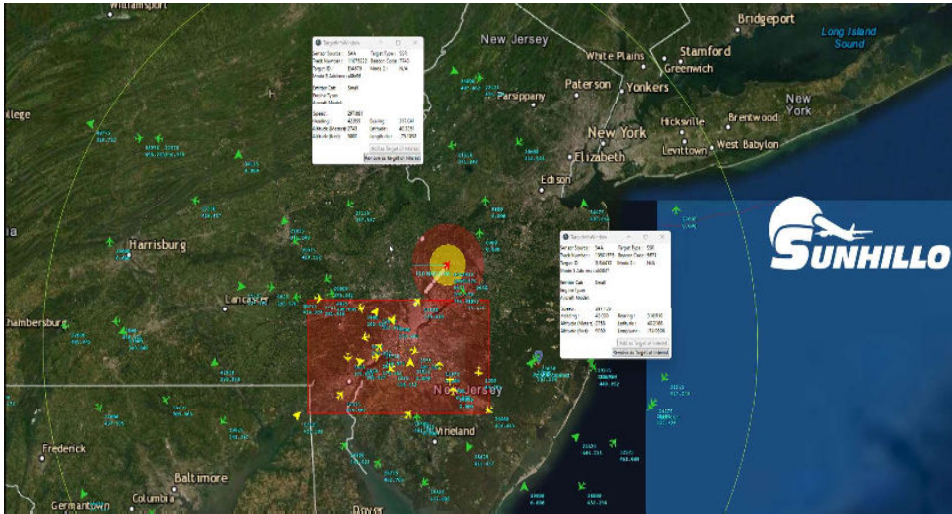




# Surveillance Monitoring System (SMS)

## Display Radar, ADS-B, & UAS Tracks



\*Sunhillo UAS-C Required to display UAS tracks

**Sunhillo's Surveillance Monitoring System (SMS)** is a powerful total package solution designed for displaying disparate surveillance sources. With a fully customizable display and geofencing, the SMS provides situational awareness to fit your requirements.

### Features:

#### Display Target Information:

Double clicking any target will bring up the Target Info Window which displays the following information: Sensor Source, Target Type, Track Number, Beacon Code, Target ID, Mode 2, Altitude, Heading, Speed, Latitude, Bearing and Longitude.

#### Custom geofencing with audible alerts:

An area can be added to the display map to highlight targets in a particular geographical location. Geofencing is configured by creating a polygon fence based on latitude/longitude coordinates, drawing on

the map or shape file import. Targets approaching or that enter into the geofenced area can be configured to trigger an audible alert.

**Recording and Playback:** The SMS has the option for recording and playback. The SMS is always recording in the background and the recordings reset after 45 days.

When using dual monitor windows, one monitor can display live data while the other displays recorded data.

#### Custom Graphical Overlays:

Overlays can be added to the SMS map to provide a different visual display of a particular geographical location without requiring an internet connection.

The SMS supports graphical overlay "stackups" with control over z-order providing varying levels of graphic detail to be stacked to correspond with areas

## Features

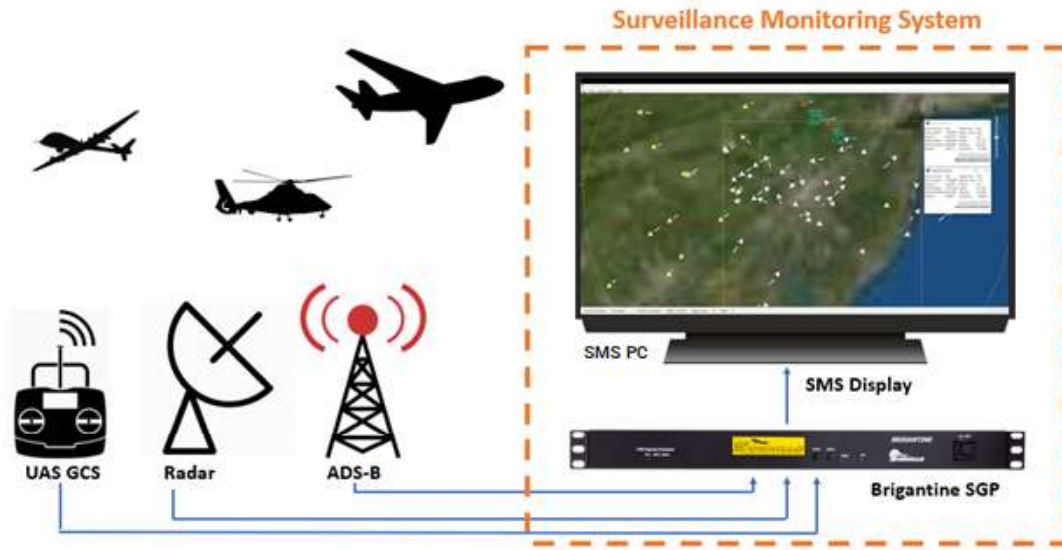
- Display Disparate Surveillance Sources including Radar, ADS-B, & UAS Tracking\*
- Display Target Information
- Custom Geofencing with Visual and Audible Alerts
- Recording and Playback
- Custom Graphical Overlays including geo-referenced formats

of most interest. Geo-referenced image types such as TIF and MrSID can be generated from imagery tools to provide mission specific overlays which can be added and removed from the map as necessary.

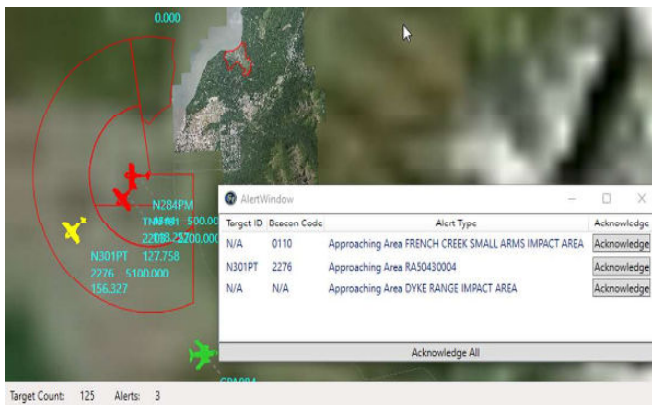
**Moving Map:** An ownship can be established utilizing a moving map to track a target as it traverses across the display. Geofencing can be dedicated to the ownship and is ideally suited for Beyond Visual Line of Sight (BVLOS) unmanned operations.

**Hardware:** The SMS includes a complete state of the art hardware package which consists of a high definition monitor, a high powered PC, and a Sunhillo Brigantine Surveillance Gateway Processor (SGP).

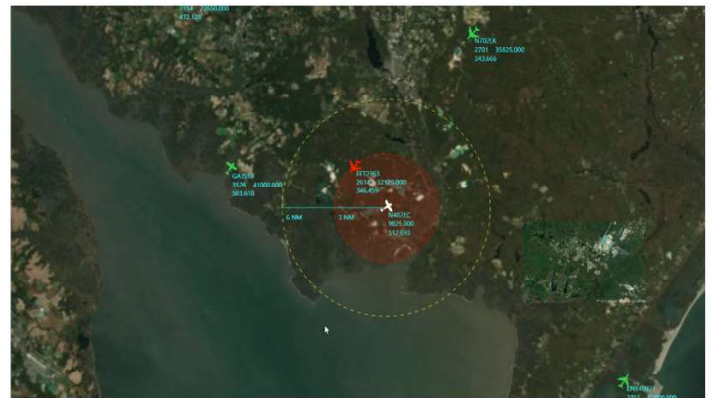
# SMS System CONOPS



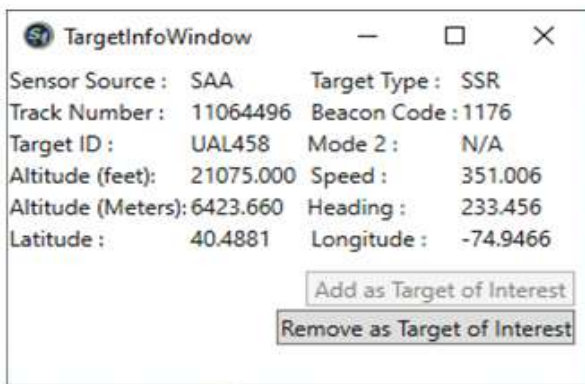
## Visual and Audible Alerts



## Moving Map



## Target Information Window



## Recording and Playback

